



Company Profile



- Civil and Structural Construction
- Site Development and Earth Work
- Road Construction
- Dewatering and Shoring Systems
- Concrete Rehabilitation and Repairing
- HDPE/ Geomembrane lining
- Roofing & Waterproofing
- Cathodic Protection System
- Industrial Coatings & Linings
- General Maintenances Services
- Erection, Fabrication & Welding of UG/AG Pipe Lines
- E & I Services
- IT Services

OUR CONTENTS

1	OUR CLIENTS
2	INTRODUCTION & VISION MISSION
3	SAFETY QUALITY POLICY
4	ORGANIZATION STRUCTURE
5	OUR DIVISIONS
5-6	CIVIL DIVISION
7	ROAD DIVISION
8	MECHANICAL DIVISION
9	ROOFING DIVISION
9	IT SERVICES DIVISION
10	OUR HUMAN RESOURCES
10	VEHICLES & EQUIPMENTS
11	QUALITY MANAGEMENT SYSTEM
11	ABOUT THE SATEL QUALITY MANUAL
11	THE QUALITY MANAGEMENT SYSTEM
11	QUALITY OBJECTIVES
12	MANAGEMENT SYSTEM PROCESS
12	RESOURCES
13	PURCHASING
13	PROVISION OF PRODUCTS OR SERVICES
13	CORRECTIVE AND PREVENTIVE ACTION
14	TRACK RECORDS / ONGOING PROJECTS
15	COMPLETED PROJECTS
16-18	CERTIFICATES / APPROVAL
19	REGISTERED CLIENTS & LOCATION MAP

OUR INTRODUCTION

SATEL ARABIA takes pleasure in introducing itself as one of the leading General Contractor in the Kingdom of Saudi Arabia. Satel is a 100% Saudi Arabia owned corporation, successfully operating in the Kingdom since 2018. It specializes in Civil /Structural, Earth Work, Road Work, Concrete Repairing, Waterproofing, Mechanical, Piping, Electrical, Instrumentation installation, including General Maintenance, Manpower supply.

It is staffed by experienced visionary managers, qualified engineers, skilled craftsman and committed laborers. SATEL prides itself in not only its depth of expertise but also for the speed and efficiency of the services rendered.

We consider Customer Intimacy as our special feature and we respond to their needs with alacrity and responsibility.

It is our aim to try to fulfill our Client's requirements, whilst carefully considering the economics and alternatives available to them, thus ensuring that the most effective systems are installed, within their budgets.



OUR VISION

To be the best and most respected Contractor and Turn key striving to reflect the highest ethical and professional standards that can deliver a world class customer experience to the client.

SATEL employs highly trained and experienced multi lingual personnel, who are conversant with latest technical standards capable of delivering excellence on site.

We shall continue to pursue our objectives of professionalism, efficiency and dedication to client satisfaction enabling us to meet the challenges of the future.

Our strategic alliance with other companies allows us to offer complete and/or additional wide range of services to our clients, including turnkey projects. SATEL has executed several projects for Royal Commission, SABIC affiliates, Saudi ARAMCO, EPC Contractors and many other private sector clients in Saudi Arabia.

It's not just business, it's the ethical commitment that we offer. We may not be the biggest name in the industry but we are certainly big on professionalism and followers of correct engineering and ethical practices.



OUR MISSION

To pursue excellence in all operations by improving Safety, Quality standards and procedures and developing competitive people that can best render a world class service to the clients.

SAFETY & QUALITY POLICY

SAFETY POLICY:

The Management of Satel Arabia is totally committed to a policy of prevention and elimination of all undesirable events, which may result in the loss of lives and/or harm to personnel & damage to company equipment.

Safety of the employees, protection of company assets and preservation of a healthy environment at work places as well as residential areas are considered the prime objective of the management.

It is also the policy of the management to thoroughly review safety, health and environment related issues first, before discussing other matters relating to business and technical aspects of the company.

The management is committed to provide and maintain safe, healthy and risk free environment by incorporating safely designed plants equipment, implementing sound engineering practices, setting performance standards, ensuring competence through employee training, timely risk assessment and management, and conducting audits to ensure strict compliance to the safety standards set by the company.

In line with this policy, all company employees are required to locate and report to their superiors of any untoward incidents and endeavor to minimize, if not totally eliminate the causes of loss to lives, properties, materials and environment by all practically possible means.

It is also the policy of the management to assure that all company contractors (and sub-contractors), suppliers and transporters strictly adhere to and abide by all the applicable safety rules and procedures.

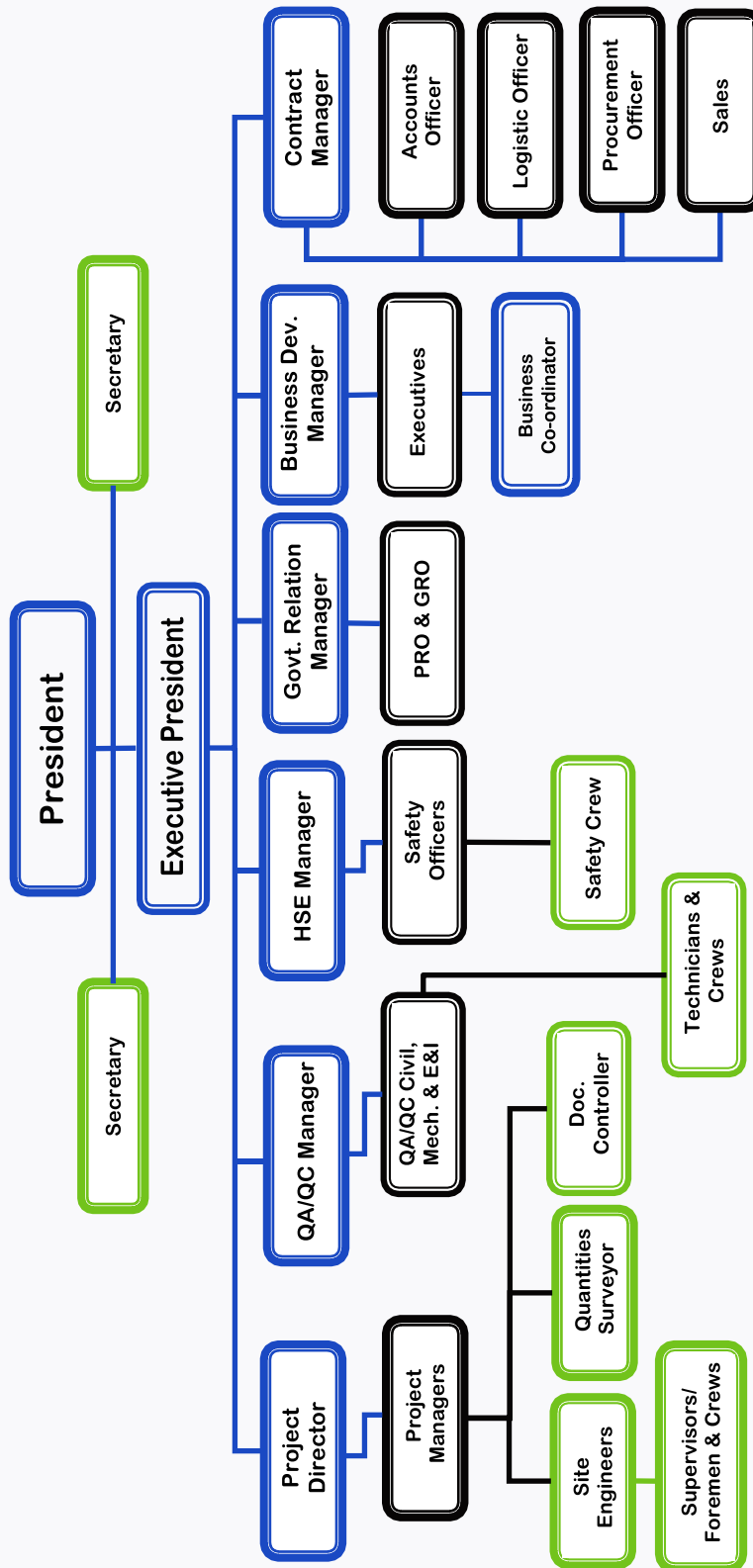
QUALITY POLICY:

The Quality Policy of SATEL is as follows:

- a. Strives to fulfill / exceed the needs and expectation of our customers by offering consistent quality in all our services.
- b. Implements its Quality Policy through QMS which is binding for all the employees. No unauthorized alterations or deviations from the QMS are permitted.
- c. Reviews its Quality Policy through regular management review meetings to ensure that service quality is maintained in line with the customer's expectations.
- d. Provides sufficient and suitable resources to implement and maintain the Quality Management System.
- e. Provides an environment that fosters a spirit of pride in workmanship and teamwork among employees.



ORGANIZATION STRUCTURE



OUR DIVISIONS

SATEL has the following Divisions:

- CIVIL DIVISION ● ROAD DIVISION
- ROOFING & WATERPROOFING DIVISION
- MECHANICAL DIVISION ● IT DIVISION

CIVIL & STRUCTURAL CONSTRUCTION:

We have a strong panel of skilled as well as semi-skilled laborers along with the supervision of highly qualified mechanical engineers and supervisors from different countries to take on any challenging civil or structural projects. Successfully completed jobs are our testimony.



CIVIL DIVISIONS

- Civil and Structural Construction
- Site Development and Earth Work
- Dewatering and Shoring Systems
- Electrical & Instrumentation Service
- Concrete Rehabilitation and Repairing
- Cathodic Protection System
- HDPE/ Geomembrane lining
- Industrial Coatings & linings
- General Maintenances Services

Brief of Key Proven Services & Expertise



SITE DEVELOPMENT AND EARTH WORK:

Satel Corporation (SATEL) is equipped with well qualified and seasoned human resource with latest equipment's as well as proven technology. SATEL has completed several land mark project which includes millions of cubic meter of backfilling within 6 months of period maintaining higher degree of safety and excellent quality for SABIC and Royal commission projects.

At the same time SATEL is a proven contractor for early works for mega construction projects of refinery and petrochemical plants for SABIC affiliates like Saudi Kayan petrochemical complex, SHARQ Expansions Projects, SAFCO Expansion Project and for Saudi Aramco like SATORP and SADARA Projects.



OUR DIVISIONS

CONCRETE REHABILITATION AND REPAIRING:

SATEL provides its expertise in handling & repairing concrete that has corroded and needs repair to bring back its strength. Our expertise includes investigation & analysis of structural condition for stability check of existing structures by corrosion of reinforcement, preparation of scope of work and method of repair using suitable materials for specific conditions & environments & providing alternate solutions i.e., re-strengthening and jacketing wherever required.



DEWATERING AND SHORING SYSTEM:

Satel Corporation (SATEL) is providing its well-known and high quality proven services in the field of Dewatering and shoring system. We have qualified technician and related pump / tools in this field. We already provide services in so many plant and still working with clients like different affiliates of SABIC, SAUDI ARAMCO, MARAFIQ, other intersatelCompanies and EPC Contractors.



ELECTRICAL INSTRUMENTATION SERVICES

SATEL also providing quality proven services in the field of Electrical Services, with major clients SATORP, SIEMENS (BI-10-10007) and SA KENTZ (BI-10-10010) along with our civil service

CATHODIC PROTECTION SYSTEM

Drilling & Installation of

- Deep well Anode
- Shallow Anode
- Sacrificial Anode
- Concrete Anode mesh and Ribbon anode including different components.

Provide installation & related service in the field of CP with our Experience Technician & Qualified Engineer.



HDPE /GEO MEMBRANE LINING:

Installation of Geo liners is a tedious process and requires great expertise in handling and application. SATEL is well experienced in installation of HDPE / GEO Membrane Liners having executed projects for SATORP, SABIC and others



GENERAL MAINTNANCE SERVICES:

SATEL is providing its well-known and high-quality proven services in the field of General Maintenance Service. Currently we are engaged in SATORP, SAUDI KAYAN and some other company.

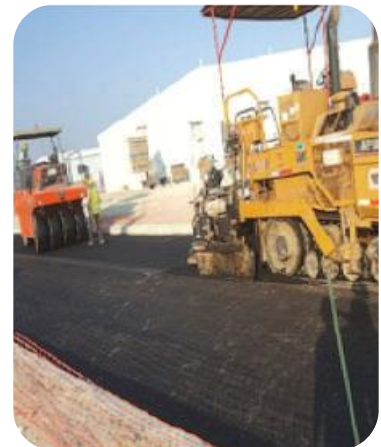
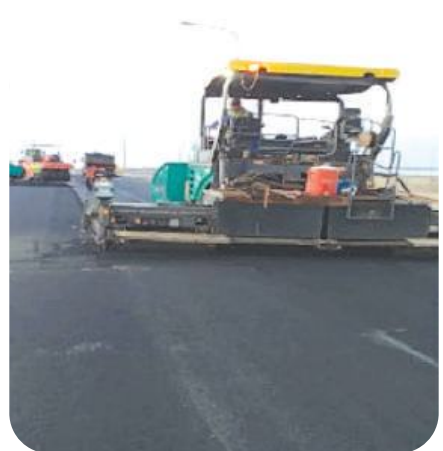


OUR DIVISIONS

ROAD DIVISION

Satel Arabia Ltd. (SATEL) is committed to providing high quality of services with the aim to work within the perimeters laid down in any contract it undertakes with full satisfaction of Clients with frame of standard HSE requirement. Our focus is to give the highest quality of work versus after the fact inspections. We never compromise with HSE while working as well as office environment, we emphasize effective communication with our clients, superior materials design, exceeding the client expectations, individual accountability for quality effectiveness and strict compliance to the target schedule. We are dedicated to the principal of total quality management through continual improvement.

SATEL is committed to deliver as per client requirements and satisfaction and hence it has established and proven its name in the field of new road construction as well as road repairing.



We have well experience team of with well equipped to handle all related types of job in plant and outside of road work. We are dedicated team striving to bring growth to the community and assist our client in making their dreams become a reality . Keeping ourself strongest quality measures applying all applicable intersatelstandards.

SATEL is committed to deliver as per client requirements and satisfaction and hence it has established and proven its name in the field of new road construction as well as road repairing

We have well experience team of with well equipped to handle all related types of job in plant and outside of road work.

OUR DIVISIONS

MECHANICAL DIVISIONS

ERECTION, FABRICATION & WELDING OF METALLIC PIPE LINES:

SATEL is engaged in providing high quality & effective services in Mechanical field for construction of Process Piping / Storage tanks/pressure vessels and structural members for various process application as per applicable Code & Standards. SATEL is involved in construction of many plants of petrochemical complexes, which include Carbon steel, stainless steel, copper and aluminum pipe line for different sizes from ½" Diameter to 64" with schedule 20 to heavy wall thickness for services like flare, petrochemical, water line, sewer line, sea water line firefighting system, pump station and vents pipes with well experienced and highly qualified workforce team and skilled manpower.

Also, our client centric approach has driven us to produce our range in accordance to their requirements and provide them with utmost satisfaction. SATEL is delivering following services but not limited to



ERECTION, FABRICATION & WELDING OF METALLIC PIPE LINES / PIPE SPOOLS:

Fabrication, welding & hydrotesting of pipe spools for different process

- Erection, fabrication, welding & hydrotestin of pipe lines on pipe racks
- Fabrication, installation & welding of pipe supports
- Installation and fixing of different types of valves and other piping accessories / instruments
- Repair / repalcement of pipe spools as per requirement



STATIC EQUIPMENTS

FABRICATION, ERECTION & WELDING OF STORAGE TANKS (HORIZONTAL / VERTICAL)

- Insttallation of storage tanks / vessels and its alignment
- Fabrication, welding and hydrotesting of non coded pressure vessels
- Repair / replacement of parts in tank/ pressure vessels

STRUCTURAL STEEL FABRICATION

- Fabrication, assembly and welding of column / beams and other members
- Erection / installation of column / beams / othres
- Fabrication and welding of staircase and gratings etc
- Fabrication, erection fixing of hand rails
- Fabrication & welding of skids/ base frames

Our major clients are different affiliates of SABIC, SAUDI ARAMCO, ROYAL COMMISSION, MARAFIQ, SWCC, SEC and other intersatel Companies such as Fluor Arabia, SAMSUNG, DAELIM, SINOPEC VALENTINE MARITIME, BCEG etc.

FABRICATION, LAYING, JOINTING/LAMINATING OF RTR/FRP PIPE LINES

SATEL has highly qualified, well experienced RTR and FRP pipe line teams who have proven their expertise by completing many prestigious Petrochemical projects in SABIC affiliates and waste treatment plants of MARAFIQ treatment plants of MARAFIQ



OUR DIVISIONS

ROOFING DIVISIONS

Indeed, just as all that has a golden colour is not Gold, all roofers are not the same. SATEL Roofing works on sound engineering principles and practices and ensures complete adherence to them when working on the sites. We are those roofers who have acquired knowledge through decades of practical experience & our desire to learn from International bodies like the NRCA, USA, Flat Roofing Council, UK & other such bodies in Europe.

The team is headed by Syed Abdallah Rizvi who has over three decades of hands on experience in waterproofing and thermal insulation. He was the President of the Roofing Academy of one of the most professional manufacturers of waterproofing products in Saudi Arabia. He has been the fountainhead of technical knowledge for engineers across the world. More than a 1000 people, from different parts of the world have learnt from his experience and improved their skills. He has made technical seminars for professional bodies in the GCC and India.

Our philosophy is "We do it just Once". We base our approach on doing it professionally and not by trial and error. Our team of applicators have been trained scientifically and on the correct waterproofing practices with great emphasis on focused application on site. Each of our application team is a certified applicator and carries the responsibility of complete customer satisfaction.



IT SERVICES DIVISIONS

SATEL Information Technology driven by a passion to deliver a range of agile and more innovative IT service solutions that will support and manage your entire IT requirements. Below are our IT services and solutions :

MICROSOFT SHARE POINTS

MIGRATION

We offer not only contents migration but we assist you with migration projects.

CUSTOMIZED

Our SharePoint expert team makes sure to customize Solution as per your requirement resulting in adding value to your Organization.

SUPPORT & MAINTENANCE

Our in-house expert team has decades of experience in addressing your issues and giving you on site support and offshore. This is critical to any user using the SharePoint solution from us as their system down time will be less.

- SATEL Information Technology focus is to provide a long-term IT Partnerships with clients.
- SATELIT can provide cost effective service & support allowing you to get the best from your I.T. investment.
- IT outsourcing services has been continuously investing in innovative technologies and experienced manpower to give you the benefits of outsourcing services



SERVICE LIST

- Physical Security
- Cloud Services
- IT Solution
- Microsoft Dynamics
- Virtualization
- SharePoint Consultancy
- Network solution
- A/V Solution
- Data Centre Designing
- Hardware Systems & Solutions
- Business Continuity
- Desktop Apps Development
- Technical Consultations
- Website Design & Hosting
- Application Development
- E-Commerce Solution
- Consultancy Services
- IT Outsourcing

OUR HUMAN RESOURCES - VEHICLES/EQUIPMENT

Our manpower is well trained in various industrial projects and client work focused at all times

S. No.	Discipline	Numbers
1	President	1
2	Executive President	1
3	Contract Manager	1
4	Business Development Manager	1
5	Projects Director / Operation Mgr	1
6	Project Manager	3
7	HSE Manager	1
8	Accounts Manager	1
9	Procurement Manager	1
10	HR & Admin Manager	1
11	Govt. Relation Manager	1
12	Construction / Site Manager	3
13	Project Control Manager	1
14	Site Engineer	6
15	QA/QC Manager	2
16	Planning & Proj. Control Engineer	2
17	Site Superintendents	6
18	Accounts Officer	4
19	Document Controller	4
20	Site Supervisors	10
21	QA/QC Inspectors	6
22	Procurement Supervisor	2
23	Logistic Supervisor	2
24	Safety Officers	6
25	Surveyor	6
26	General Foremen	16
27	Work Permit Receivers	10
28	Masons, Carpenters and Steel Fixers	30
29	Electrical & Instrument Technicians	8
30	Welders	10
31	Fabricators & Fitters	6
32	FRP Jointer & Laminators	4
33	Paver Operator	3
34	Roller Operator	5
35	Rubber Roller Operator	5
36	Screw Men	6
37	Equipment Operators	40
38	Skilled Labors	35
39	Semi-skilled Labors	50
40	Labors	60
	TOTAL STRENGTH	361

SATEL Vehicles and Equipment support the projects to comply with the stringent working standards and regulations. It helps SATEL to complete the projects successfully prior to the target dates.

target dates.

S. No.	Equipment / Machine	Numbers
1	Excavator	8
2	Bulldozer	3
3	Dump Truck	8
4	Bus	5
5	Loader	3
6	Grader	2
7	Paver	2
8	Tendom Roller	3
9	Rubber Roller (PTR)	3
10	MC 1 Tanker	1
11	MC 2 Tanker	1
12	Road Roller Compactor	5
13	Water Tanker	4
14	Maintenance Truck	2
15	Diesel Tanker	2
16	Land Cruiser Prado	3
17	Mitsubishi Pajero	3
18	Pickup	20
19	Car	15
20	Forklift	3
21	Asphalt Cutter	7
22	Air Compressor	8
23	Jack Hammer	15
24	Generator	8
25	Welding Machine	9
26	Vertical Drilling Machine	4
27	Soil resistivity meter	4
28	Total Station	4
29	Auto Level	4
30	Hart Communicator	2
31	VSWR	2
32	Digital Multimeter	8
33	Insulation Tester	4
34	DFT Guage	4
35	Torque Wrench	4
36	H2S Gas Detector	20
37	Gas Detector Quattro	4
38	Crowcon Gas Detective Plus	2
	TOTAL STRENGTH	205

QUALITY MANAGEMENT SYSTEM

ABOUT THE SATEL QUALITY MANUAL

SATEL has made the “Strategic Business Decision” to develop and implement an effective Quality Management Systems (QMS) across all areas of the Company. The implementation of the QMS is intended to improve and sustain the overall performance of our business, products and services. Examples of the benefits include:

STATIC EQUIPMENTS

- The ability to consistently provide services that meet customer and applicable Statutory and Regulatory requirements;
- The ability to plan our processes and their interactions by employing the Plan-Do-Check-Act (PDCA) cycle and risk-based thinking in our daily operations;
- The facilitating of opportunities to enhance customer satisfaction;
- Addressing risks and opportunities associated with its context and objectives.

The QMS Manual is considered the normative basis of reference to the Intersatel Standard and shall be used internally to provide an overview of ISO 9001:2015 requirements and how they apply at SATEL. The QMS Manual is used externally to introduce the elements of our QMS to our customers and other external organizations to the extent necessary.

THE QUALITY MANAGEMENT SYSTEM:

SATEL has reviewed and analyzed key aspects of itself and its stakeholders to determine the strategic direction of the company. This involves:

Understanding our core Services, and scope of management system.

Identifying “interested parties” (stakeholders) who receive our Services, or who may be impacted by them, or those parties who may otherwise have a significant interest in our company.

Understanding internal and external issues that are of concern to SATEL and its interested parties; also identified in the document. Many such issues are identified through an analysis of risks facing either SATEL or the interested parties. Such issues



are monitored and updated as appropriate, & discussed as part of management reviews.

This information is then used by senior management to determine the company's strategic direction. This is defined in records of management review, and periodically updated as conditions and situations change

QUALITY OBJECTIVES:

Quality Objectives have been established at all corresponding levels and processes throughout the organization to implement the quality policy, meet and exceed requirements for processes, and to improve the QMS and its performance.

Quality objectives are strategic, apply to the entire Company and shall:

1. Be consistent with Quality Policy.
2. It is our objective to provide the satisfaction to our customers by providing high quality services on time, every time.
3. We are committed to providing safe working places to all of our employees.
4. Our company aims to expand operation by establishing branches to closely monitor our Customer's needs.
5. It is our objective to bring highly innovative technology machines to support the continual development.
6. It is our operating philosophy to do it right from the first time, all the time.



QUALITY MANAGEMENT SYSTEM

MANAGEMENT SYSTEM PROCESS:

Process Identification

SATEL has adopted a process approach for its management system. By identifying the top-level processes within the company, and then managing each of these discretely, this reduces the potential for nonconforming Products or Services discovered during final processes or after delivery. Instead, nonconformities and risks are identified in real time, by actions taken within each of the top-level processes.

Each process may be supported by other activities, such as tasks or sub-processes. Monitoring and control of top-level processes ensures effective implementation and control of all subordinate tasks or sub-processes.

Each top-level process has a Process Definition Doc Title document which defines:

- Applicable inputs and outputs
- Process owner(s)
- Applicable responsibilities and authorities
- Applicable risks and opportunities
- Critical and supporting resources
- Criteria and methods employed to ensure the effectiveness of the process

Process Control and Objectives

Each process has at least one objective established for it; this is a statement of the intent of the process. Each objective is then supported by at least one “metric” or key performance indicator (KPI) which is then measured to determine the process’ ability to meet the quality objective.

Note: some processes have multiple objectives and multiple metrics. This is determined by the nature of the process, its impact on Products or Services, and associated risks.

Quality objectives are used to control the processes. Additional objectives for Products or Services may be assigned, but these will also be used to measure process effectiveness.

Throughout the year, metrics data is measured and gathered by process owners or other assigned managers, in order to present the data to Operations Manager. The data is then analyzed by Operations Manager in order that may set goals and make adjustment for the purposes of long-term continual improvement.

When a process does not meet a goal, or an unexpected problem is encountered with a process, the corrective and preventive action process...

Outsourced Processes

Any process performed by a third party is considered an “outsourced process” and must be controlled, as well. The company’s outsourced processes, and the control methods implemented for each.

The type and extent of control to be applied to the outsourced process take into consideration.

- a) The potential impact of the outsourced process on the company’s capability to provide product that conforms to requirements,
- b) The degree to which the control for the process is shared,
- c) The capability of achieving the necessary control through the purchasing contract requirements.

RESOURCES:

Provision of Resources

SATEL determines and provides the resources needed:

- a) To implement and maintain the management system and continually improve its effectiveness
- b) To enhance customer satisfaction by meeting customer requirements

Resource allocation is done with consideration of the capability & constraints on existing internal resources, as well as needs related to supplier expectations. Resources & resource allocation are assessed during management reviews.

Work Environment

SATEL provides a clean, safe and well-lit working environment. The Operations Manager of SATEL manages the work environment needed to achieve conformity to product requirements. Specific environmental requirements for products are determined during quality planning and are documented in subordinate procedures, work instructions, or job documentation. Where special work environments have been implemented, these shall also be maintained per 9.3 above.

Human factors are considered to the extent that they directly impact on the quality of Products or Services.

Note: Social, psychological and safety aspects of the work environment are managed through activities outside of the scope of the management system. Only work environment aspects which can directly affect process efficiency or product and service quality are managed through the management system.

OUR HUMAN RESOURCES

Operation Planning and Control

SATEL plans and develops the processes needed for Product or Service realization. Planning of Product or Service realization is consistent with the requirements of the other processes of the management system. Such planning considers the information related to the context of the organization, current resources and capabilities, as well as Product or Service requirements.

Customer Related Activities

During the intake of new business SATEL captures:

- a) Requirements specified by the customer, including the requirements for delivery and post-delivery activities;
 - b) Requirements not stated by the customer but necessary for specified or intended use, where known
 - c) Statutory and regulatory requirements related to the Product or Service;
 - d) Any additional requirements determined by SATEL.
- Once requirements are captured, SATEL reviews the requirements prior to its commitment to supply the Product or Service. This review ensures that:
- a) Product or Service requirements are defined,
 - b) Contract or order requirements differing from those previously expressed are resolved,
 - c) The organization has the ability to meet the defined requirements, and/or the claims for the Products or Services it offers, and
 - d) Risks have been identified and considered.

Customer Communication

SATEL has implemented effective communication with customers in relation to:

- a) Providing information relating to Products or Services;
 - b) Handling enquiries, contracts or orders, including changes;
 - c) Obtaining customer feedback relating to Products or Services, including customer complaints;
 - d) Handling or controlling customer property;
- Establishing specific requirements for contingency actions, when relevant.

PURCHASING

SATEL ensures that purchased products or services conform to

specified purchase requirements. The type and extent of control applied to the supplier and the purchased products or services is dependent on the effect on subsequent Product or Service or the final Product or Service.

SATEL evaluates and selects suppliers based on their ability to supply product and service in accordance with the organization's requirements. Criteria for selection, evaluation and re-evaluation are established.

Purchases are made via the release of formal purchase orders and/or contracts which clearly describe what is being purchased. Received products or services are then verified against requirements to ensure satisfaction of requirements. Suppliers who do not providing conforming products or services may be requested to conduct formal corrective action.

PROVISION OF PRODUCTS OR SERVICES

Control of Provision of Products or Services

To control its provision of Products or Services, SATEL considers, as applicable, the following:

- a) the availability of documents or records that define the characteristics of the Products or Services as well as the results to be achieved;
- b) the availability and use of suitable monitoring and measuring resources;
- c) the implementation of monitoring and measurement activities;
- d) the use of suitable infrastructure and environment;
- e) the appointment of competent persons, including any required qualifications;
- f) the implementation of actions to prevent human error;
- g) The implementation of release, delivery and post delivery activities. At this time, SATEL does not utilize any in-house "special processes" where the result of the process cannot be verified by subsequent monitoring or measurement.

CORRECTIVE AND PREVENTIVE ACTION

SATEL takes corrective action to eliminate the cause of nonconformity in order to prevent recurrence. Likewise, the company takes preventive action to eliminate the causes of potential nonconformities in order to prevent their occurrence

TRACK RECORDS

ON GOING PROJECTS

SL	DETAILS OF PROJECTS	AREA	CLIENT	PROJECT START	PROJECT STATUS
1	Seawater Concrete repair, CP Installation and stainer work	Jeddah	SAFCO	JAN'21	ONGOING
2	Preparation of Well Pad, Construction of Road Work etc., At System B Project	Dammam	Tasnee	JAN'22	ONGOING
3	Construction of ROQ, Excavation of Pipe laying and Welding, Backfilling and Berm Constructions etc.	Dammam	KBR	FEB'20	ONGOING
4	Preparation of Grading, Marl Capping, Compaction, Installation of HDPE Lining etc.	Riyadh	SPM	JUNE'21	ONGOING
5	Excavation, Pipe laying, Joint Erection Testing, Dewatering and Backfilling etc.	JUBAIL	RC	OCT'20	ONGOING
6	Civil construction and RTR work in VRU Dehran with ODICO	DEHRAN	WISON	APRIL'23	ONGOING
7	Civil Maintenance work with SATORP, KBR, SANKYU etc, (GMS1 & 2) inside plant	JUBAIL	Tasnee	JAN'21	ONGOING

Engaged with our valuable Clients in different part of kingdom

TRACK RECORDS

Saudi Aramco Total Refining and Petrochemical Co. (SATORP) / PO 4100005025	+966-13-343 4759	Supply of Parking Bump	Jubail, Saudi Arabia	Nov/16	Nov-16
SIEMENS / Saudi ARAMCO 4506983097	+966-13-8826506	Miscellaneous Civil & Mechanical Work	Uthmania, Saudi Arabia	Sep/16	Sep-16
Dragados/SK- RC-16088-CO-CP-003		Civil Works and Installation for Cathodic Protection	Jubail, Saudi Arabia	Aug/16	Oct-18
KELLER/ SK, PO# 0330/ 16		Supply of Dump truck for Shifting Excavated Material to Landfill area	Jubail, Saudi Arabia	Aug/16	Nov-16
Saudi Aramco Total Refining and Petrochemical Co. (SATORP) PO# 4300000113	+966-13-343 4759	Repair of Drain Channel and Replace gratings At The Coke Storage In The Refinery	Jubail, Saudi Arabia	Aug/16	Nov-16
Saudi Aramco Total Refining and Petrochemical Co. (SATORP) PO# 4200001357	+966-13-343 4759	Covering of Open Storm Water Drains IN	Jubail, Saudi Arabia	Aug/16	Dec-16
Dragados/SK- 16110/DGC/PD/WWTP/089/16		Fabrication Installation of pipe and support inside MBBR	Jubail, Saudi Arabia	Jun/16	Jun-16
Saudi Aramco Total Refining and Petrochemical Co. (SATORP) PO# 42000048949	+966-13-343 4759	Provision & Installation of Speed Bumps at KFIP	Jubail, Saudi Arabia	Jun/16	Jun-16
Saudi Aramco Total Refining and Petrochemical Co. (SATORP) PO# 4200001349	+966-13-343 4759	Design, Engineering, Supply, Installation and Commissioning of New Foundation and Steam Piping for New Sulphur Pump	Jubail, Saudi Arabia	Jun/16	Jul-17
Saudi Aramco Total Refining and Petrochemical Co. (SATORP) PO# 4100004838	+966-13-343 4759	Fabrication and Installation of Barrier Gate at KFIP	Jubail, Saudi Arabia	May/16	Jun-16
Saudi Aramco Total Refining and Petrochemical Co. (SATORP) PO# 4100004821	+966-13-343 4759	Civil Works and Excavation and FRP Pipe Repairs at KFIP Area	Jubail, Saudi Arabia	Apr/16	Jun-16
Saudi Aramco Total Refining and Petrochemical Co. (SATORP) PO# 4100004819	+966-13-343 4759	Floor Replacement for FCR11 & 12	Jubail, Saudi Arabia	Apr/16	Jun-17
CTCI/ Saudi Kayan; Project No. 16C2330B-S0001	+966-515088389	FENCING AND PAVING DEMOLITION,	Jubail, Saudi Arabia	Apr/16	Dec-16
SINOPEC/ Saudi Aramco Total Refining and Petrochemical Co. (SATORP); SEG2016-ISF-SC-0011-IK		Asphalt Concrete Paving Work	Jubail, Saudi Arabia	Mar/16	Jun-17
Saudi Aramco Total Refining and Petrochemical Co. (SATORP) PO# 4200001309		Install Additional Kitchen Amenities to MCB	Jubail, Saudi Arabia	Nov/15	Jan-16
SANKYU/Saudi Aramco Total Refining and Petrochemical Co. (SATORP) ; ContractSA-SC-01-CVL-2014		Civil Maintenance Work for SATORP GMS-2 Contract	Jubail, Saudi Arabia	Sep/15	Dec-17
KBR/Saudi Aramco Total Refining and Petrochemical Co. (SATORP) ; Contract F175-00-SC-CIV-002		Civil Maintenance Work for SATORP GMS-1 Contract	Jubail, Saudi Arabia	Sep/15	Dec-17
CNCE7 Arabia Co. Ltd./ SABIC/ E12039-CO-00-00 CC7/NBC-001		Civil Construction Project of SABIC PCQ-2 Tank Zone	Jubail, Saudi Arabia	Aug/15	Oct-16
KENTZ/ Saudi Aramco / 670-CST-SOW-002	+966 13 806 5443	Civil Construction for SAOO Projects (Well Head)	Udailiya- Saudi Arabia	Aug/15	Jul-18
Dragados/SAUDI KAYAN (PO 16095-RC-CO-R-007)		Preparation for the Surface of Heavy Lifting Area for EG Reactor-Saudi Kayan	Jubail, Saudi Arabia	Mar/15	Jul-16
MCC5/ SABIC (LOI # MCC5-NBC-001)		Road & Trenching Work in Industrial Port, Jubail	Jubail, Saudi Arabia	15-Feb	Sep-16
Dragados/YANSAB (PO 16094-RC-CO-R-007)		Preparation for the Surface of Heavy Lifting Area for EG Reactor, YANSAB	YANBU, Saudi Arabia	Feb/15	Jul-15
Dragados/SHARQ (PO 16093-RC-CO-R-007)		Preparation for the Surface of Heavy Lifting Area for EG Reactor-2	Jubail, Saudi Arabia	Sep/14	Jan-15
Arcelor Mittal / 5700001063	+966-13-347 2300	Fabrication, Supply and Installation of Chimney and Chimney Support inside the Plant	Jubail, Saudi Arabia	Sep/14	Nov-14
Dragados/ UNITED (PO 16092-RC-CO-R-007)		Preparation for the Surface of Heavy Lifting Area for EG Reactor-2	Jubail, Saudi Arabia	May/14	Jun-14
Saudi Aramco Total Refining and Petrochemical Co. (SATORP) 3200000032 Road Embankment		Road Marking, Installation of Signage, Installation of Guard Rail	Jubail, Saudi Arabia	Apr/14	Jun-15

Successfully completed more than 50 projects with different types pf clients in last several years with full satisfaction of the Customers

OUR CERTIFICATES

الرؤية
VISION ٢٠٣٥
مملكة البحرين
Kingdom of Bahrain



المركز السعودي للأعمال
Saudi Business Center

وزارة التجارة
Ministry of Commerce



السادة / مؤسسة سائل العربية لإدارة الأمانة العامة

نسأل الله أن يكتب لكم التوفيق والتجاح في عملكم التجاري وأن تكونوا شريكاً في تعزيز اقتصاد المملكة العربية السعودية.

يسرنا إبلاغكم بأن رقم منشأتكم المود هو

٧٠٢٤٧٣٦١٢٩

وقد تم ربطه بالخدمات الحكومية التالية..

<div style="background-color: #007bff; color: white; padding: 5px; font-weight: bold;">٦٤١٢٠١٥٦٩</div> <div style="background-color: #007bff; color: white; padding: 5px; font-weight: bold;">رقم منشآتكم</div>	 المؤسسة العامة للتأمينات الاجتماعية General Organization for Social Insurance
<div style="background-color: #007bff; color: white; padding: 5px; font-weight: bold;">٤٠٣٠٥١٩٦١</div> <div style="background-color: #007bff; color: white; padding: 5px; font-weight: bold;">رقم منشآتكم</div>	 وزارة التجارة Ministry of Commerce
<div style="background-color: #007bff; color: white; padding: 5px; font-weight: bold;">٤٩٣٦٢٩</div> <div style="background-color: #007bff; color: white; padding: 5px; font-weight: bold;">رقم منشآتكم</div>	 الاتحاد العام للهيئات التجارية بالمملكة Federation of Saudi Chambers
<div style="background-color: #007bff; color: white; padding: 5px; font-weight: bold;">لا يوجد</div> <div style="background-color: #007bff; color: white; padding: 5px; font-weight: bold;">رقم منشآتكم</div>	 بلدي balady
<div style="background-color: #007bff; color: white; padding: 5px; font-weight: bold;">٦١٠٣٦٩٧٤٦٧</div> <div style="background-color: #007bff; color: white; padding: 5px; font-weight: bold;">رقم منشآتكم</div>	 سجل الشركات SPL
<div style="background-color: #007bff; color: white; padding: 5px; font-weight: bold;">٣٠٠٢١٤٠٥٩٩</div> <div style="background-color: #007bff; color: white; padding: 5px; font-weight: bold;">رقم منشآتكم</div>	 هيئة الزكاة والضريبة والجمارك Zakat, Tax and Customs Authority

للاستفادة من الخدمات المقدمة من الجهات الحكومية







دليل التأجير

MCgovSA
mc.gov.sa

وزارة التجارة Ministry of Commerce		شهادة تسجيل فرع مؤسسة تجارية Branch Of Individual Establishment Registration Certificate	
رقم التسجيل Registration No.	٧٠٢٧٤٧٢١٩٩	الرقم المدني Civil No.	٧٠٢٧٤٧٢١٩٩
الاسم التجاري Commercial Name	١٤١٤/١/٢٧٤	الاسم الشخصي Personal Name	١٤١٤/١/٢٧٤
خالد عبدالعزيز العراب Khalid Abdulaziz Al-Arab		التأسيس Incorporation	
رقم السجل المدني بطلبه للأنوال Civil Registry No. of the Applicant	١٠١٥١٠٢٤٢٧	تاريخ الميلاد Date of Birth	١٤١٤/١/٢٧٤
مؤهله الأكاديمي Academic Qualification	جدا	مؤهله Qualification	جدا
حاله Status	٢٩٩٦١	نوع العمل Type of Work	م : ب
رقم سجل العمل التجاري Commercial Work Record No.	٥٠٣٠١٠٢٤٠٣	نوع العمل Type of Work	م : ب
الاسم التجاري Commercial Name	مؤسسة سائق الحريمة وزارة التجارة Al-Hajjaj Foundation Ministry of Commerce	الاسم الشخصي Personal Name	٢٩٩٦١
النوع Type	٢٩٩٦١	نوع العمل Type of Work	م : ب
النشاط Activity	٥٠٠٠	نوع العمل Type of Work	م : ب
رأس المال Capital	٥٠٠٠	نوع العمل Type of Work	م : ب
إسم المدير أو الوكيل الموثوق Authorized Director or Agent	خالد عبدالعزيز العراب Khalid Abdulaziz Al-Arab	نوع العمل Type of Work	١٤١٤
التوقيع Signature	١٠١٥١٠٢٤٢٧	نوع العمل Type of Work	١٤١٤
رقم السجل المدني Civil Registry No.	١٠١٥١٠٢٤٢٧	نوع العمل Type of Work	١٤١٤
سجلات المحاكم Court Records	١٠١٥١٠٢٤٢٧	نوع العمل Type of Work	١٤١٤
يشهد مكتب السجل المدني بحريته Civil Registry Office Certifies its Freedom	١٤١٤/١/٢٧٤	نوع العمل Type of Work	١٤١٤
وتشهي صحته كافة الشهادات And It Certifies the Validity of All Certificates	١٤١٤/١/٢٧٤	نوع العمل Type of Work	١٤١٤



وزارة التجارة
Ministry of Commerce



وزارة التجارة
Ministry of Commerce

مؤسسة سائل العربية للتجارة الإلكترونية



التسجيل التجاري: 4090510963

رمزك التجاري QR Code

من خلاله يمكنك التحقق المباشر من المعلومات:

- ✓ رخصة البلدية
- ✓ برنامج نطاقات
- ✓ الفقرة الزكاة

- ✓ السجل التجاري
- ✓ شهادة السعودة
- ✓ شهادة الزكاة



MCanySA

.....

OUR CERTIFICATES



الهيئة العامة للزكاة والدخل
General Authority of Zakat & Tax



ضريبة
المضافة

الرقم المميز: 3002140599 تاريخ الإصدار: 2022/09/08



اسم المكلف: _____

رقم السجل/الرخصة/العقد: 4030203203

الفترة الضريبية: ربع سنوي-Quarterly

تاريخ استحقاق أول إقرار ضريبي: 2018/04/30

Taxpayer Name: _____

CR / License / Contract No.: 4030203203

Tax Period: Quarterly-ربع سنوي

First Filing due date: 2018/04/30





كمكاف مسجل في ضريبة القيمة المضافة، لا يجوز لك تحصيل ضريبة القيمة المضافة من عملائك قبل تاريخ نفاذ التسجيل بالضريبة. في حال تبين غير ذلك، ستقوم الهيئة العامة للزكاة والدخل بتلقيد الغرامات المستحقة

هذه الوثيقة مرسلة من النظام الآلي ولا تحتاج إلى توقيع

- الهيئة العامة للزكاة والدخل -



الهيئة العامة للزكاة والدخل
General Authority of Zakat & Tax



ضريبة
المضافة

الرقم المميز: 3002140599 تاريخ الإصدار: 2022/09/08



اسم المكلف: _____

رقم التسجيل الضريبي: 300214059900003

تاريخ نفاذ التسجيل: 2018/01/01

عنوان المكلف: جدة عسافان، الشارع العام، 25561

Taxpayer Name: _____

VAT Registration Number: 300214059900003

Effective Registration Date: 2018/01/01

Taxpayer Address: جدة عسافان، الشارع العام، 25561





كمكاف مسجل في ضريبة القيمة المضافة، لا يجوز لك تحصيل ضريبة القيمة المضافة من عملائك قبل تاريخ نفاذ التسجيل بالضريبة. في حال تبين غير ذلك، ستقوم الهيئة العامة للزكاة والدخل بتلقيد الغرامات المستحقة

هذه الوثيقة مرسلة من النظام الآلي ولا تحتاج إلى توقيع

- الهيئة العامة للزكاة والدخل -

3:46 2023/9/19 م

مملكة إثبات عنوان وطني

Kingdom of Saudi Arabia

المملكة العربية السعودية



To Verify

للتحقق
<https://proof.address.gov.sa/VerifyProofNA.aspx>

تم إصدار هذا الإثبات إلكترونياً ولا يتطلب التوقيع عليه
 تم إصدار هذا الإثبات بناءً على طلب الموضح أعلاه، وتحظر قطعاً تقليده أو إدخال أي تعديلات عليه سواء بالإضافة أو الحذف، وبعد الإثبات النفا إذا شابه
 شيء من ذلك، كما يعرض صاحبه للمساءلة القانونية.

This proof has been issued electronically and does not require a signature

This proof has been issued upon the request of the above-named, and it is absolutely prohibited to imitate it or make any modifications to it, whether by addition or deletion, and the proof is considered void if it is marked by something, and its owner is subject to legal accountability.



19992 <https://splonline.com.sa/ar/national-address>

<https://proof.address.gov.sa/Default?QAccountNumber=31326777888&QServiceNo=21023974637&printType=c>

2/2

3:46 2023/9/19 م

مملكة إثبات عنوان وطني

تحميل



العنوان الوطني
 NATIONAL ADDRESS

رقم الإثبات
 تاريخ الإصدار
 تاريخ الانتهاء

إثبات عنوان
 Address Proof

Address Holder Details

بيانات صاحب العنوان

Name مؤسسة سائل العربية لإدارة
 الأملك الاسم
 Customer Acc. 3 1 3 2 6 7 7 7 8 8 9 رقم الحساب
 Reg. Date 19/9/2023 تاريخ التسجيل

Address Details

تفاصيل العنوان

Short Address J D M A 4 9 8 1 العنوان المختصر
 Building No. Street رقم المبنى
 4 9 8 1 Abdul Rahman Al Khuzee عبد الرحمن الخزازي 4 9 8 1
 Secondary No. District الرقم الفرعي
 7 5 9 5 Al Marwah Dist. حي المروة 7 5 9 5
 Postal Code الرمز البريدي
 2 3 5 4 5 2 3 5 4 5
 City المدينة
 JEDDAH جدة

<https://proof.address.gov.sa/Default?QAccountNumber=31326777888&QServiceNo=21023974637&printType=c>

1/2

REGISTRATION WITH SOME CLIENTS



SATEL ARABIA
HEAD OFFICE: JEDDAH
CR NUMBER: 4030203203
VAT REGISTRATION DATE: 30/04/2018
4981, ABDUL RAHMAN AL KHUZAEI, AL MARWA, 23545, JEDDAH, SAUDI ARABIA

